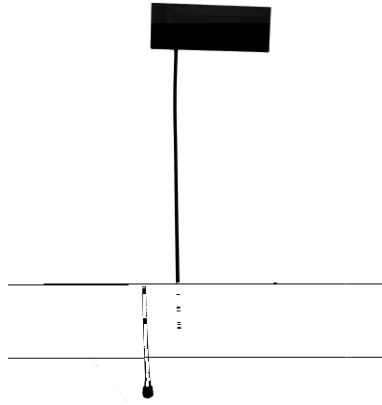
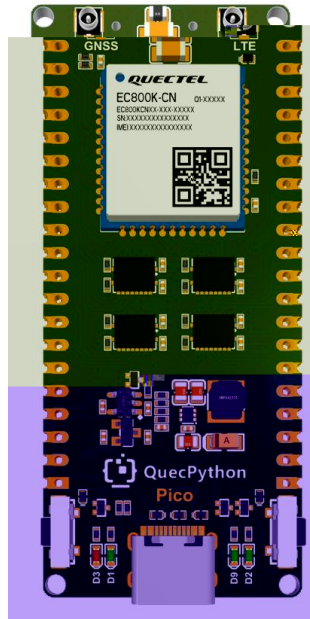


# EC800X Pico



1

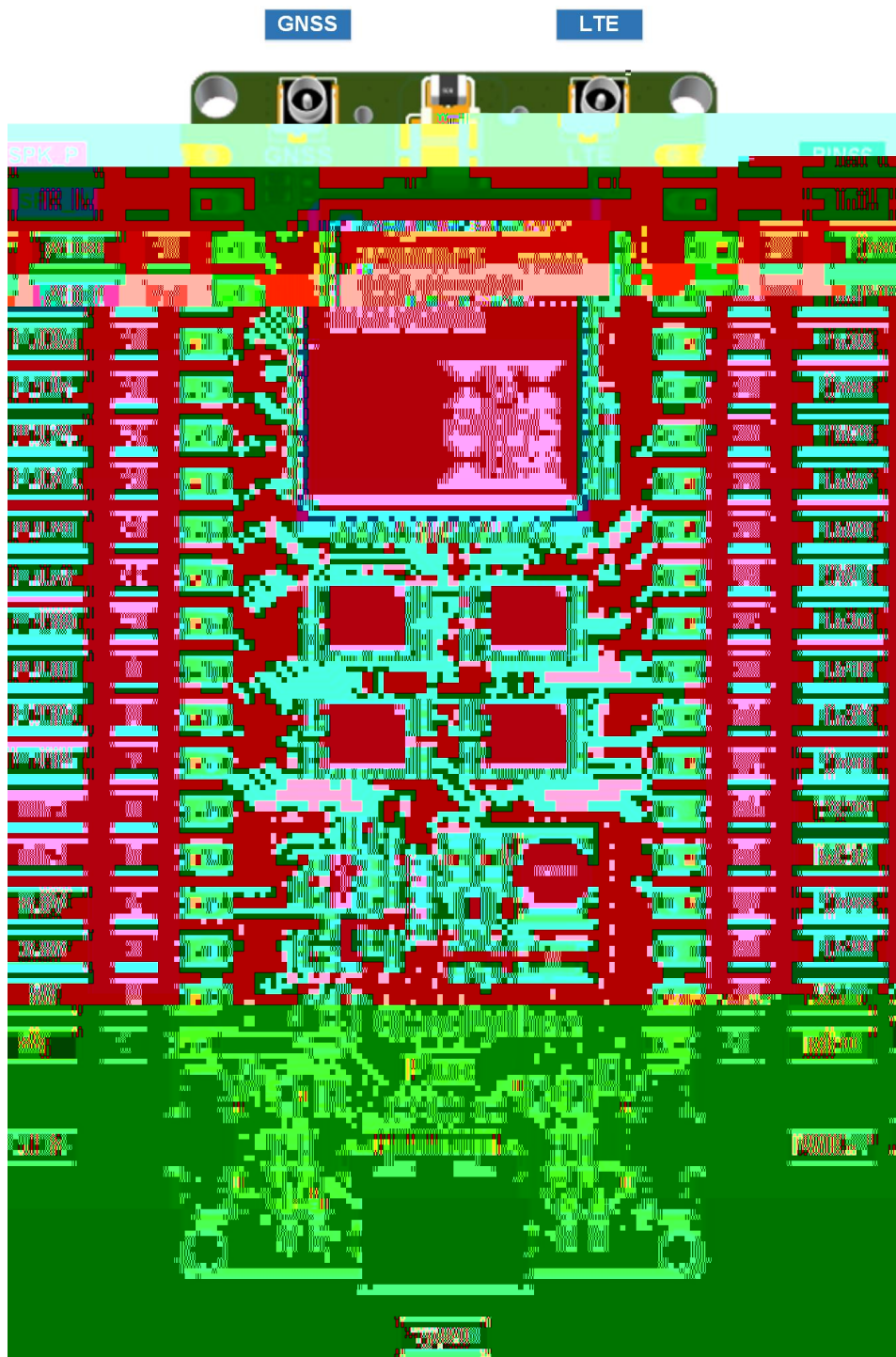


- 
- 
- 
- 
- 
- 
- 

且

- 
- 
- 2

产





		且下	
		且下	
		下	
		下	

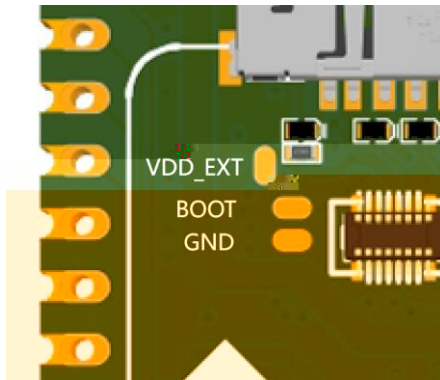
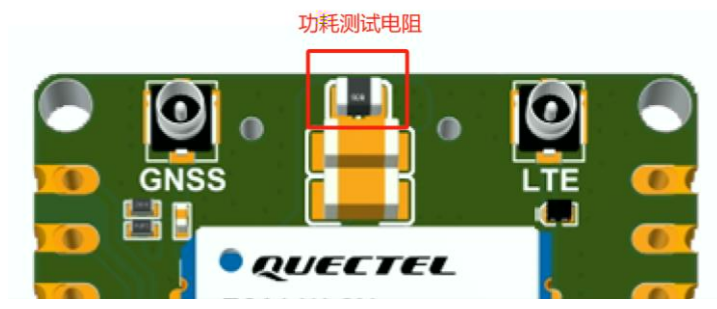
也

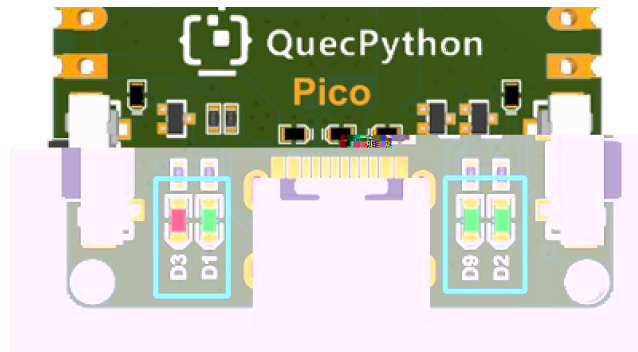
下

且下

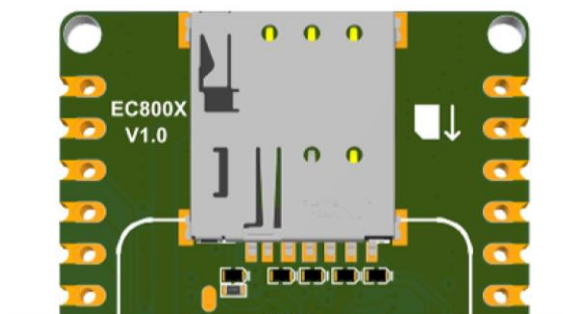
且下

下






### 3 SIM

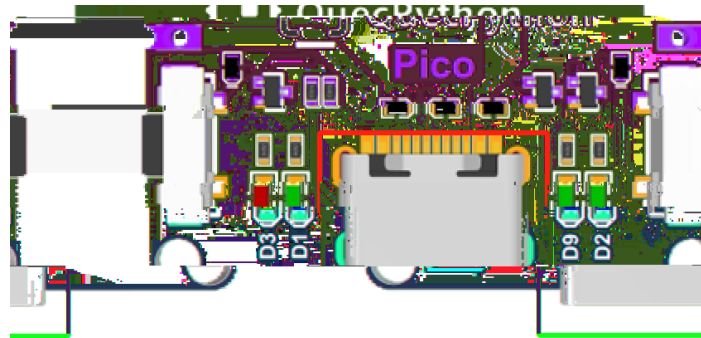


”

-

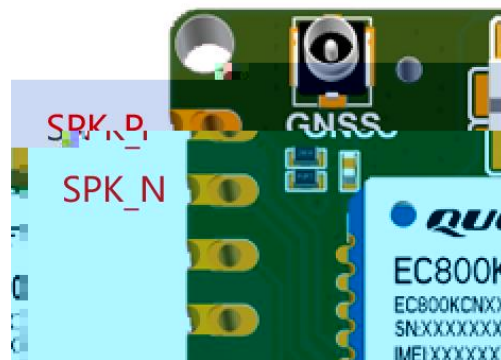
/

## 4 USB



产

## 5 SPK



- 
-

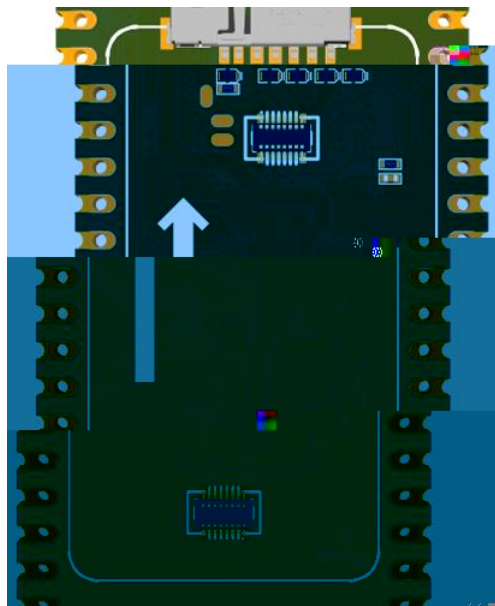
## 6 ADC

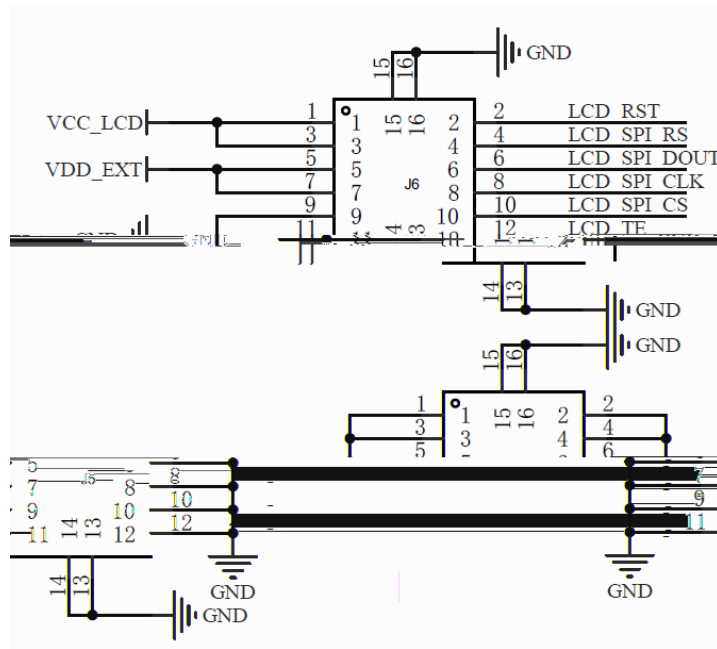
也



参数	最小值	典型值	最大值	单位
ADC0 电压	0	-	1.2	V
ADC1 电压	0	-	1.2	V
ADC 分辨率	-	-	12	位

## 7 LCD





NO.	Item	Contents	Unit
1	LCD Size	1.47	inch
2	Display Mode	Normally black	-
3	Resolution	172(H)RGB x320(V)	pixels
4	Pixel pitch	0.0337(H) x 0.1011(V)	mm
5	Active area	17.3892(H) x 32.352(V)	mm
6	Module size	40.20(H) x 20.20(V) x 4.40(D)	mm

7	Pixel Arrangement	RGB Vertical Stripe	
8	Interface	4 Line SPI	-
9	Display Colors	262K	colors
10	Drive IC	ST7789V3	-
11	Luminance(cd/m <sup>2</sup> )	350 (TYP)	(Cd/m <sup>2</sup> )
12	Viewing Direction	All View	Best in
13	Backlight	3 White LED Parallel	-
14	Operating Temp.	-20℃ ~ +70℃	℃
15	Storage Temp.	-30℃ ~ +80℃	℃
16	Weight	2.1	g

# 8

且

且

引脚名	引脚号	I/O	描述	备注
ANT_MAIN	35	AIO	主天线接口	50 Ω 特性阻抗。

## 备注

模块支持 Wi-Fi Scan 功能。由于共用主天线接口，两种功能不可同时使用。时分复用，Wi-Fi Scan 只接收不发送。
---

频段	发送 (MHz)	接收 (MHz)
LTE-FDD B1	1920~1980	2110~2170
LTE-FDD B3	1710~1785	1805~1880
LTE-FDD B5	824~849	869~894
LTE-FDD B8	880~915	925~960
LTE-TDD B34	2010~2025	2010~2025
LTE-TDD B38	2570~2620	2570~2620
LTE-TDD B39	1880~1920	1880~1920
LTE-TDD B40	2300~2400	2300~2400
LTE-TDD B41	2535~2675	2535~2675

频段	最大值	最小值
LTE-FDD B1/B3/B5/B8	23 dBm ±2 dB	< -39 dBm
LTE-TDD B34/B38/B39/B40/B41	23 dBm ±2 dB	< -39 dBm

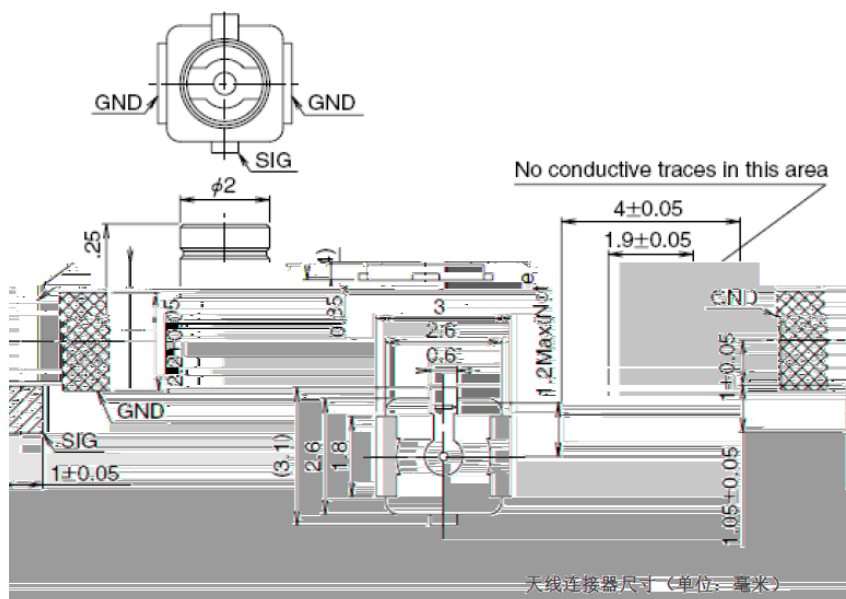
频段	接收灵敏度（典型值）（dBm）			3GPP 要求 （主集 + 分集）
	主集	分集	主集 + 分集	
LTE-FDD B1 (10 MHz)	-99.5 dBm	-	-	-96.3 dBm
LTE-FDD B3 (10 MHz)	-99.0 dBm	-	-	-93.3 dBm
LTE-FDD B5 (10 MHz)	-98.5 dBm	-	-	-94.3 dBm
LTE-FDD B8 (10 MHz)	-99.0 dBm	-	-	-93.3 dBm
LTE-TDD B34 (10 MHz)	-100.0 dBm	-	-	-96.3 dBm
LTE-TDD B38 (10 MHz)	-99.0 dBm	-	-	-96.3 dBm
LTE-TDD B39 (10 MHz)	-100.0 dBm	-	-	-96.3 dBm
LTE-TDD B40 (10 MHz)	-100.5 dBm	-	-	-96.3 dBm
LTE-TDD B41 (10 MHz)	-99.0 dBm	-	-	-94.3 dBm

- 
- 
- 


参数	条件	典型值	单位
灵敏度	捕获	-146	dBm
	重捕	-160	
	追踪	-160	
首次定位时间	冷启动 @ 空旷区域	28	s
	温启动 @ 空旷区域	27	
	热启动 @ 空旷区域	3.7 <sup>3</sup>	

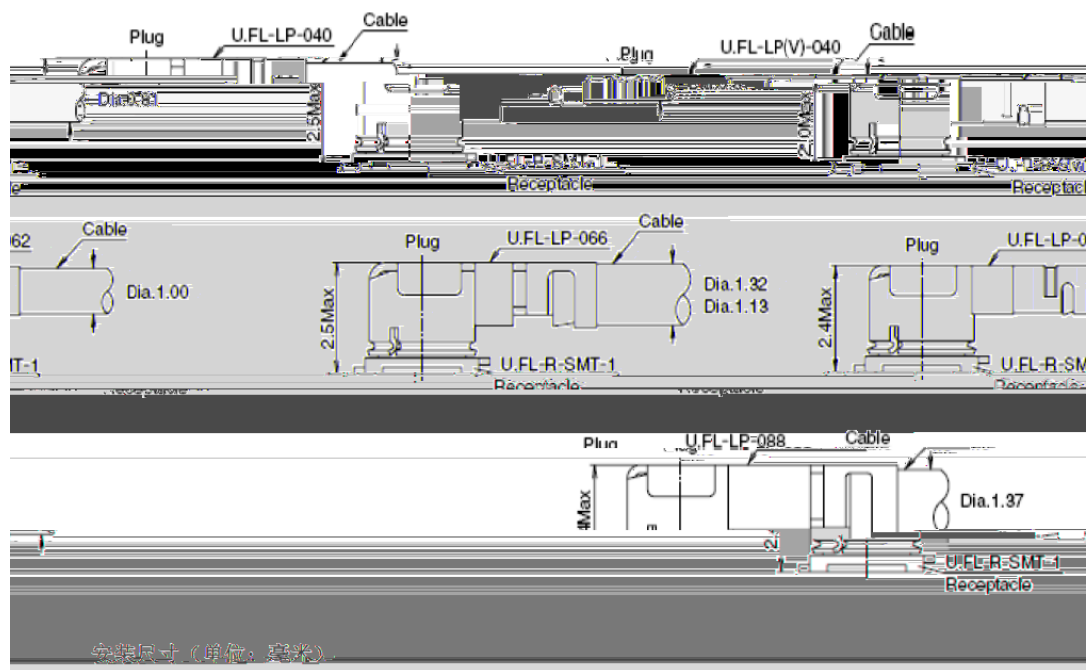
### 备注

1. 追踪灵敏度。横轴可以保证对导航信号的跟踪和定位所需的最低信号电平（持续定位至少2分钟）。
2. 重捕灵敏度。跟踪接收器在信号丢失后重新捕获信号的能力。
3. 捕获灵敏度。接收器在冷启动时首次捕获信号的能力。



Part No.	U.FL-LP-002	U.FL-LP-040	U.FL-LP-060	U.FL-LP-088
Mated Height	2.4mm Max. (2.3mm Nom.)	2.5mm Max. (2.4mm Nom.)	2.5mm Max. (2.4mm Nom.)	2.0mm Max. (1.9mm Nom.)
Applicable Cable	Dia. 1.37mm Coaxial cable	Dia. 0.65mm Coaxial cable	Dia. 1.13mm and Dia. 0.92mm Coaxial cable	Dia. 0.65mm Coaxial cable
Weight (mg)	71.7	53.7	59.1	34.8
Rolls				YES

U.FL-LP 连接线系列

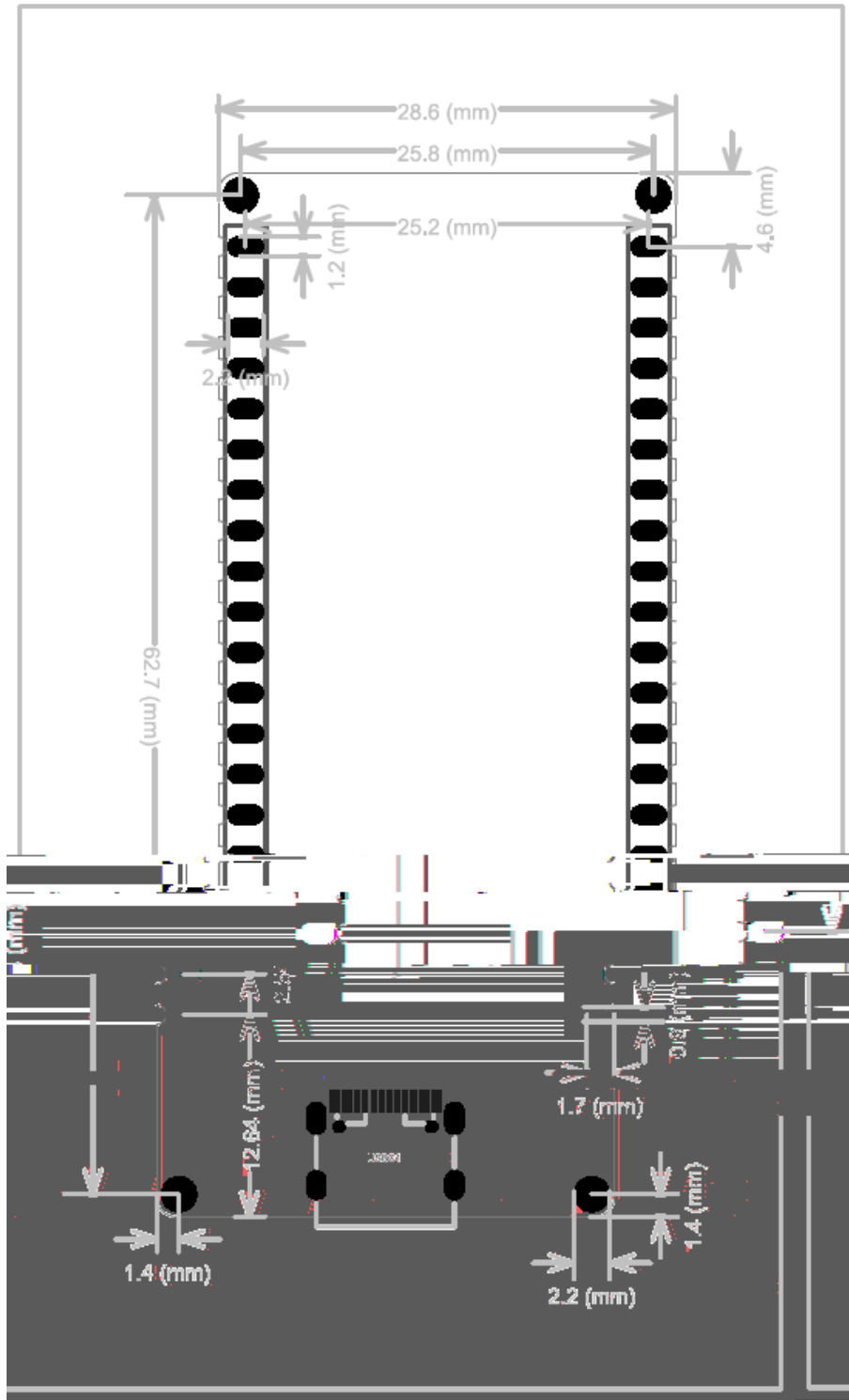


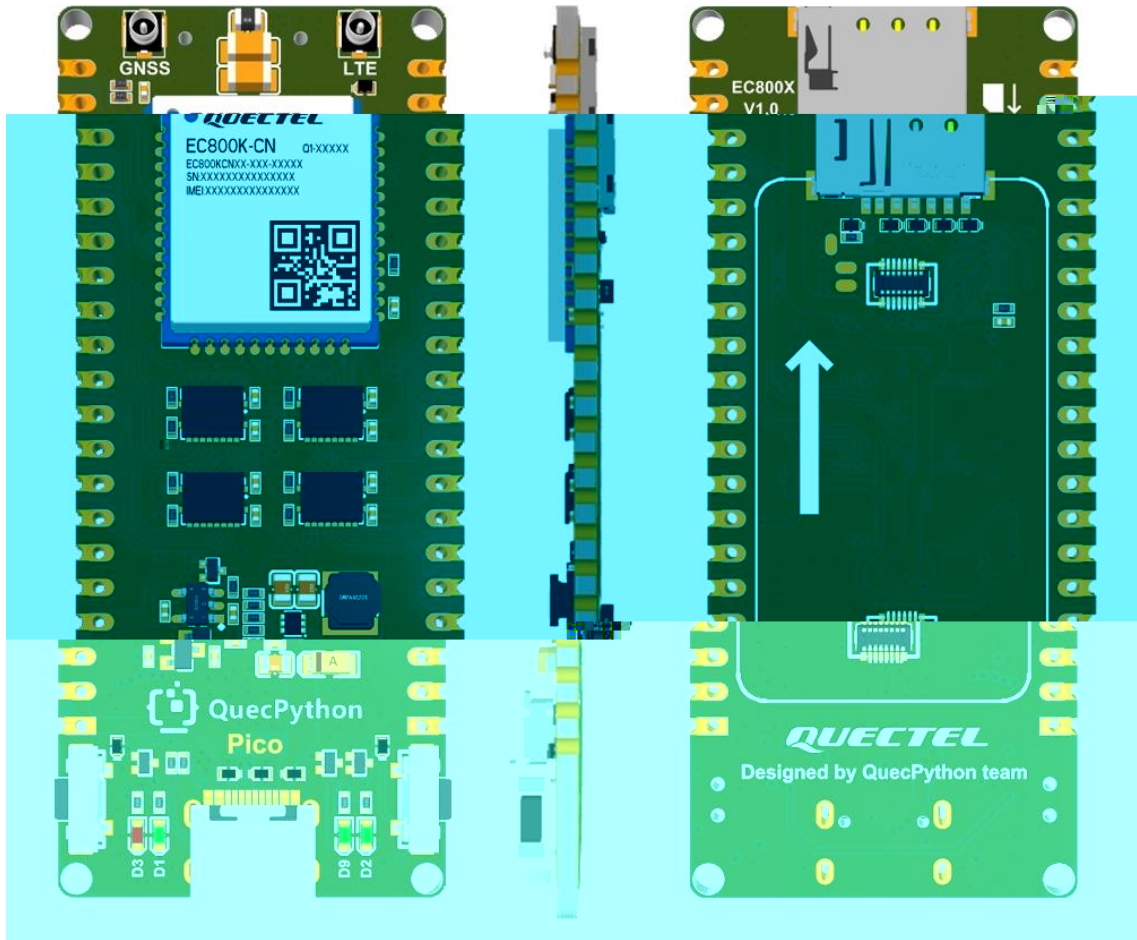
安装尺寸 (单位: 毫米)

9

	-		
	-		
	-		
	-		
	-		
	-		
	-		

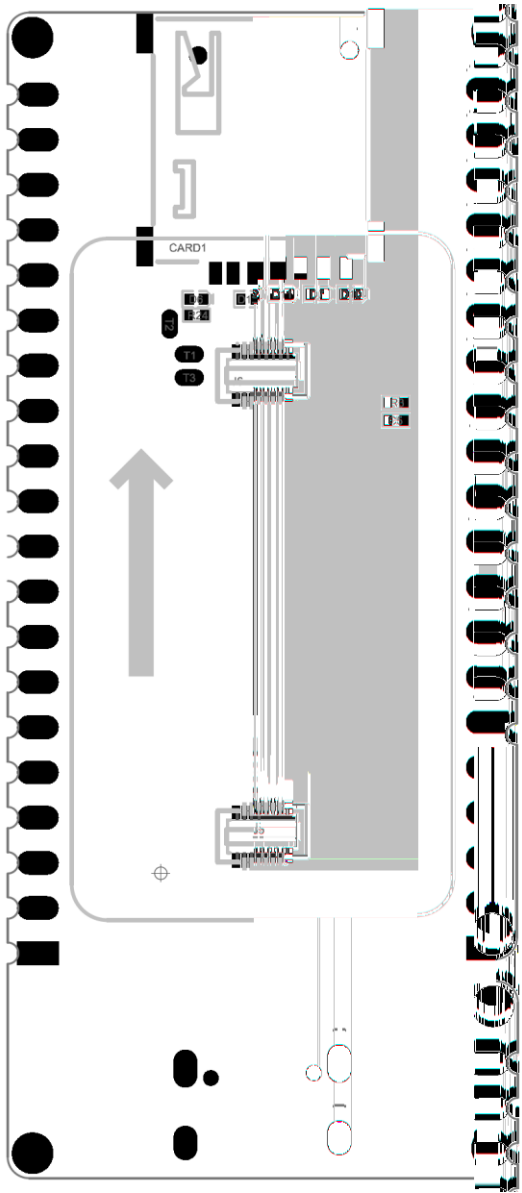
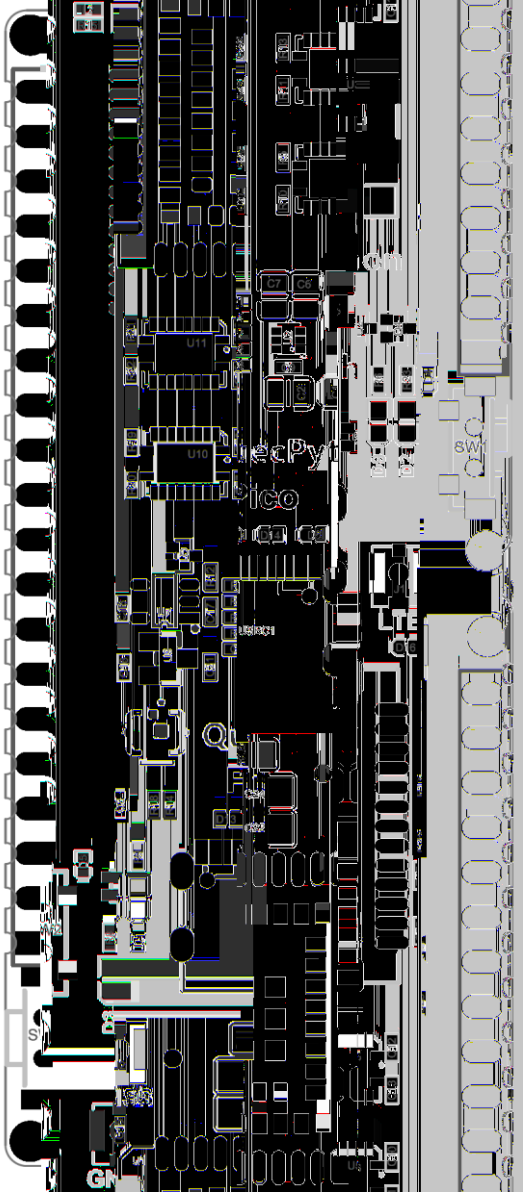
		两			
		两			
			-		

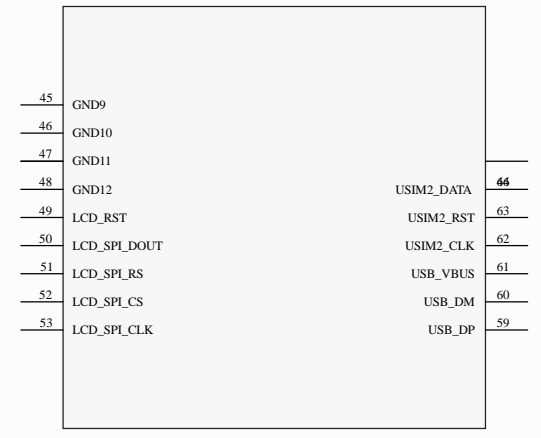
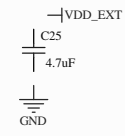
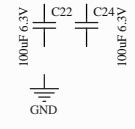
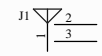
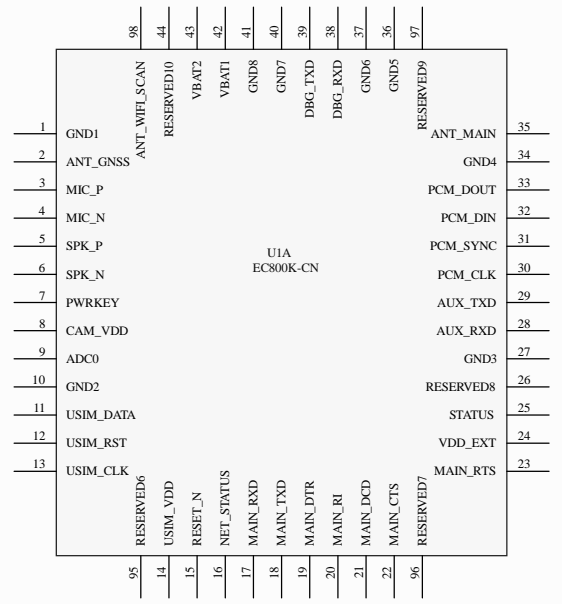





11

12





1

2

3

4

A

A

B

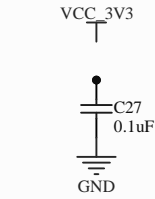
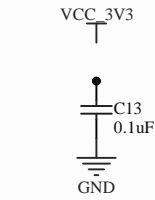
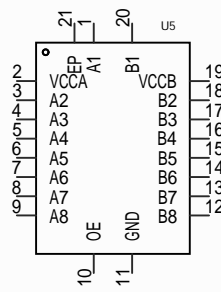
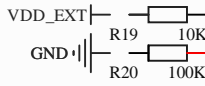
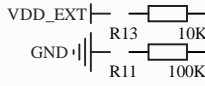
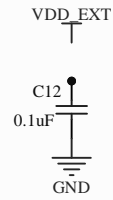
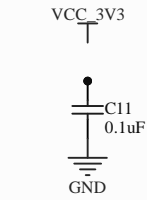
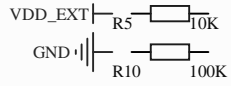
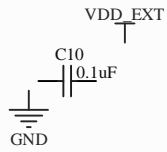
B

C

C

D

D



Level Translator

1

2

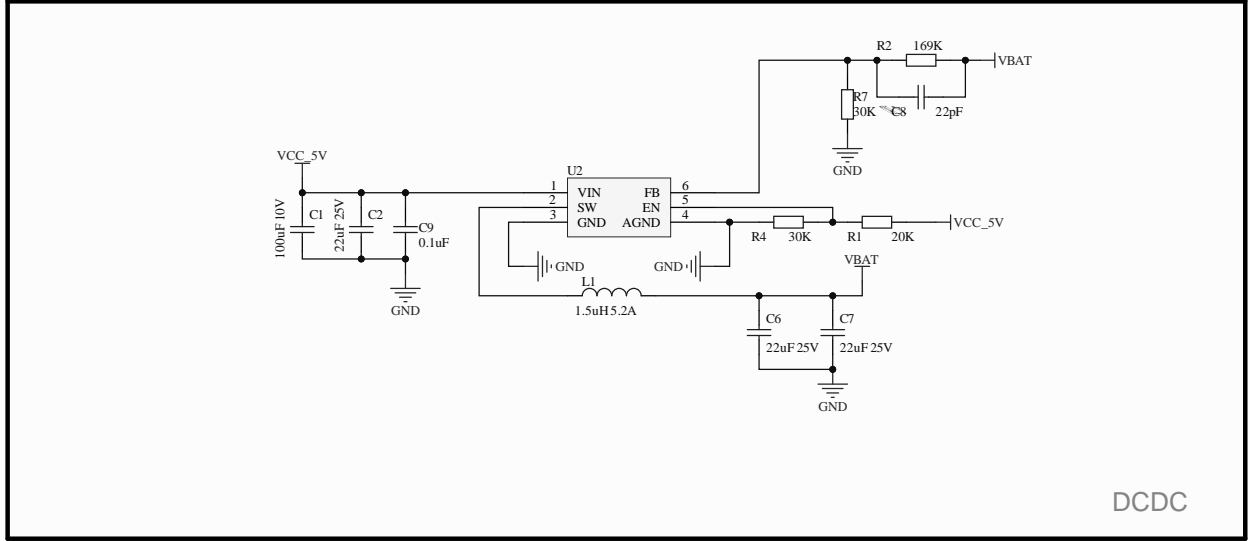
10.dF

3

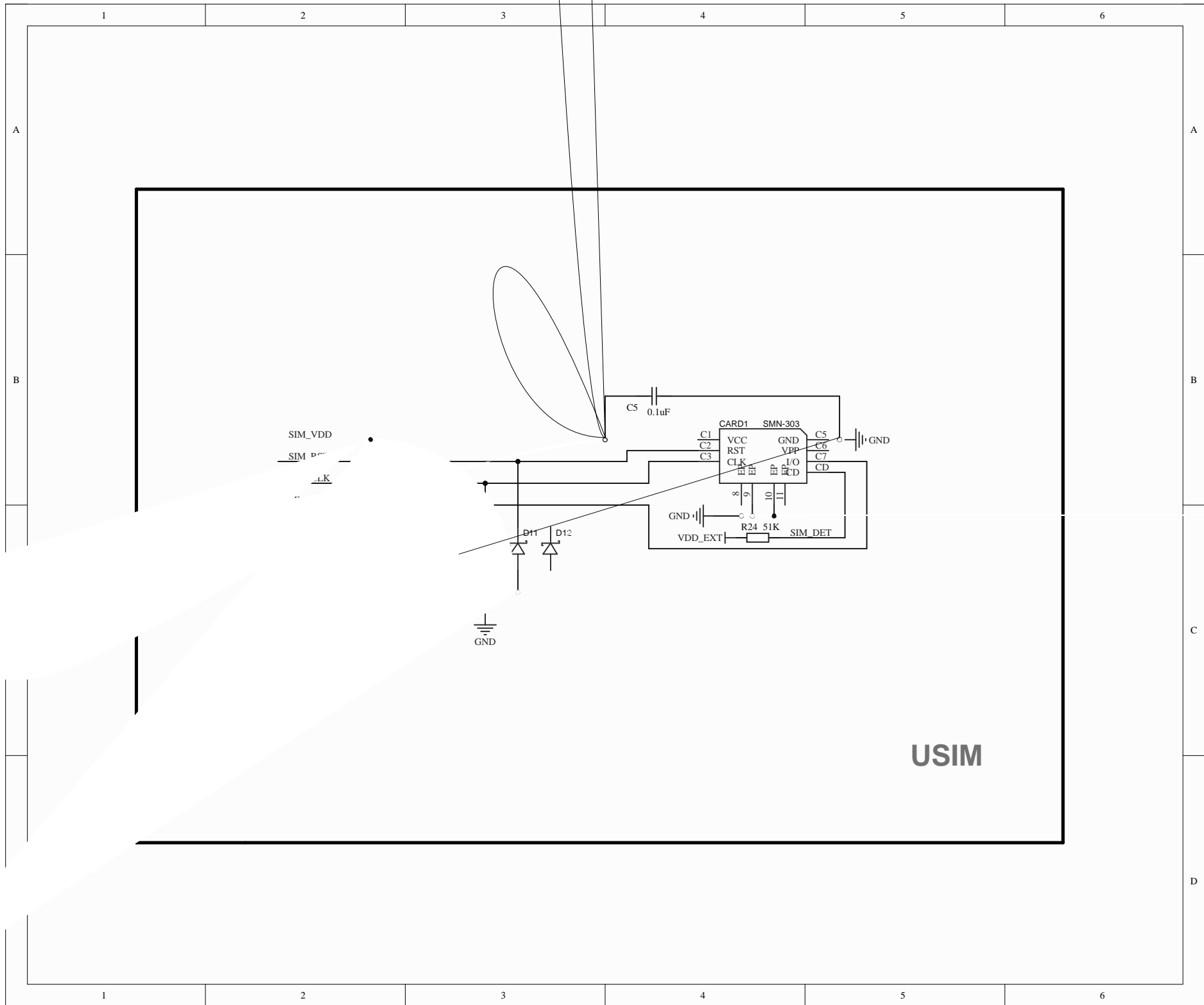
4



LDO



DCDC



SIM\_VDD

SIM\_POW

SIM\_CLK

C5  
0.1uF

CARD1 SMN-303

C1 VCC

C2 RST

C3 CLK

GND

VDD

I/O

CD

C5

GND

C6

GND

C7

GND

CD

GND

VDD\_EXT

R24 51K

SIM\_DET

D11

D12

GND

USIM